

Forest folk BOOT LINER

*Keep little toes warm
whilst splashing about
puddles with these fun
fleece boot liners*

Project **JENNY COLLINS**



*"To find the correct size,
place the child's foot on the sole template
and select the corresponding size"*



Jenny

SKILL LEVEL: + + + +

MATERIALS:

Fox:

- 50x140cm orange fleece
- 25x30cm white fleece
- 4 green buttons
- 2 brown or black buttons

Rabbit:

- 50x140cm grey fleece
- 25x30cm white fleece
- 4 blue buttons
- 2 red heart-shaped buttons
- 2 white pompoms

For both designs:

- black embroidery thread & needle
- all-purpose thread
- point turner (or chopstick)
- free templates from www.sewnowmag.co.uk

NOTES:

All seam allowances are 1cm unless otherwise stated

CUTTING:

Using the templates provided, cut:

- 2 x Sole (grey or orange)
- 2 x Upper (grey or orange)
- 2 x Leg (grey or orange)
- 2 x Cuff (grey or orange)
- 8 x Ear (4 x white and 4 x orange/grey)
- 4 x Cheek (white)

Fox only:

- 4 x Tail (orange)
- 4 x Tail Tip (white)
- 4 x Eye (white)

HOW TO MAKE:

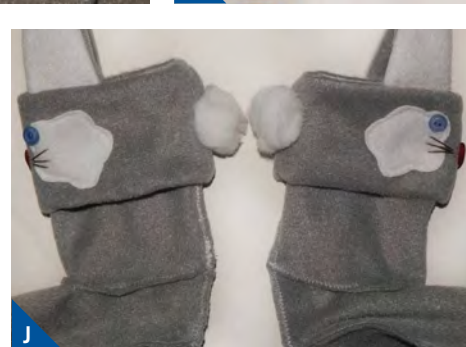
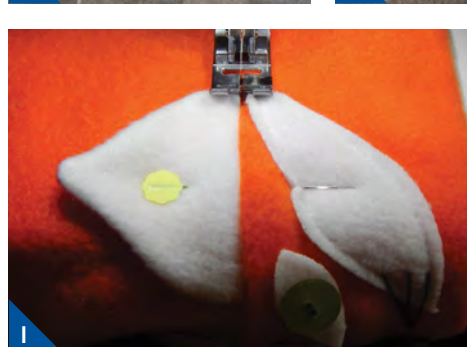
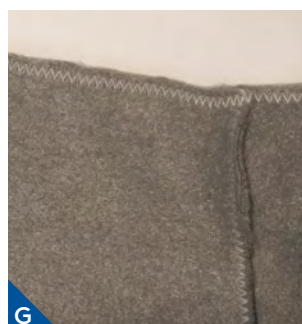
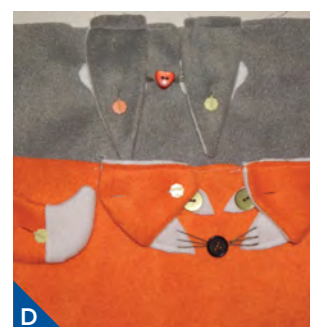
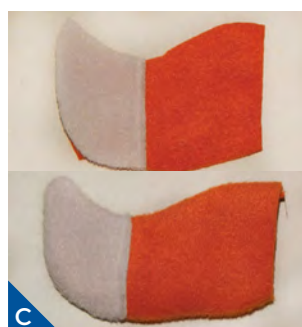
1 Using a straight stitch, sew the cheeks onto the cuff pieces as marked on the template. Sew on the buttons and features using embroidery thread. (See Pic A)

2 With right sides together, pin and straight-stitch the white and orange/grey ear pieces together, leaving the bottom open. Trim the seam allowance and turn right sides out using the point turner or chopstick. (See Pic B)

3 Sew the white tip of the fox's tail to the orange part. With right sides together, straight-stitch the tails together, leaving the side open. Trim the seam allowance and turn right sides out (See Pic C).

4 Pin the ears and tail (fox) to the cuff. (See Pic D) Straight-stitch together inside the seam allowance.

5 Place the cuff animal with the facial features facing up, then lay the boot





Sam

“AN OVERLOCKER AND A THREE-THREAD FLAT LOCK CAN ALSO BE USED ON THE SEAM RIDGE”


leg right side upwards on top, lining up the longest edge along the top (ear) edge of the cuff. Pin, then straight-stitch together. (See Pic E)

6 With wrong sides together, line the bottom edge of the bootleg with the straight edge of the boot upper. (See Pic F) Pin, zigzag-stitch, then trim the seam allowance. The raw edges of the seam will be on the *outside* of the boot liner so the smooth side is next to the foot.

7 With wrong sides together, line up the back edges of the boot liner, match the seams and zigzag-stitch together. (See Pic G). Trim the seam allowance.

8 Pin the sole to the upper, starting at the heel and toe. Sew one side then the other using a zigzag stitch. (See Pic H.) Trim the seam allowance.

9 Turn the bottom part of the cuff inside to enclose the cuff/leg seam. Stitch in the ditch to enclose the raw edge. (See Pic I.)

10 If making the rabbits, hand-sew a pompom onto the rear cuff seam. (See Pic J) 

Measure the top of the boot before making the faces to check the size of the cuff

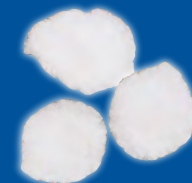
GET THE LOOK



White, orange and grey polar fleece

This plain super-soft 147cm-wide polar fleece is great for all sorts of projects and perfect for beginners £4.99 per metre

www.fabricland.co.uk

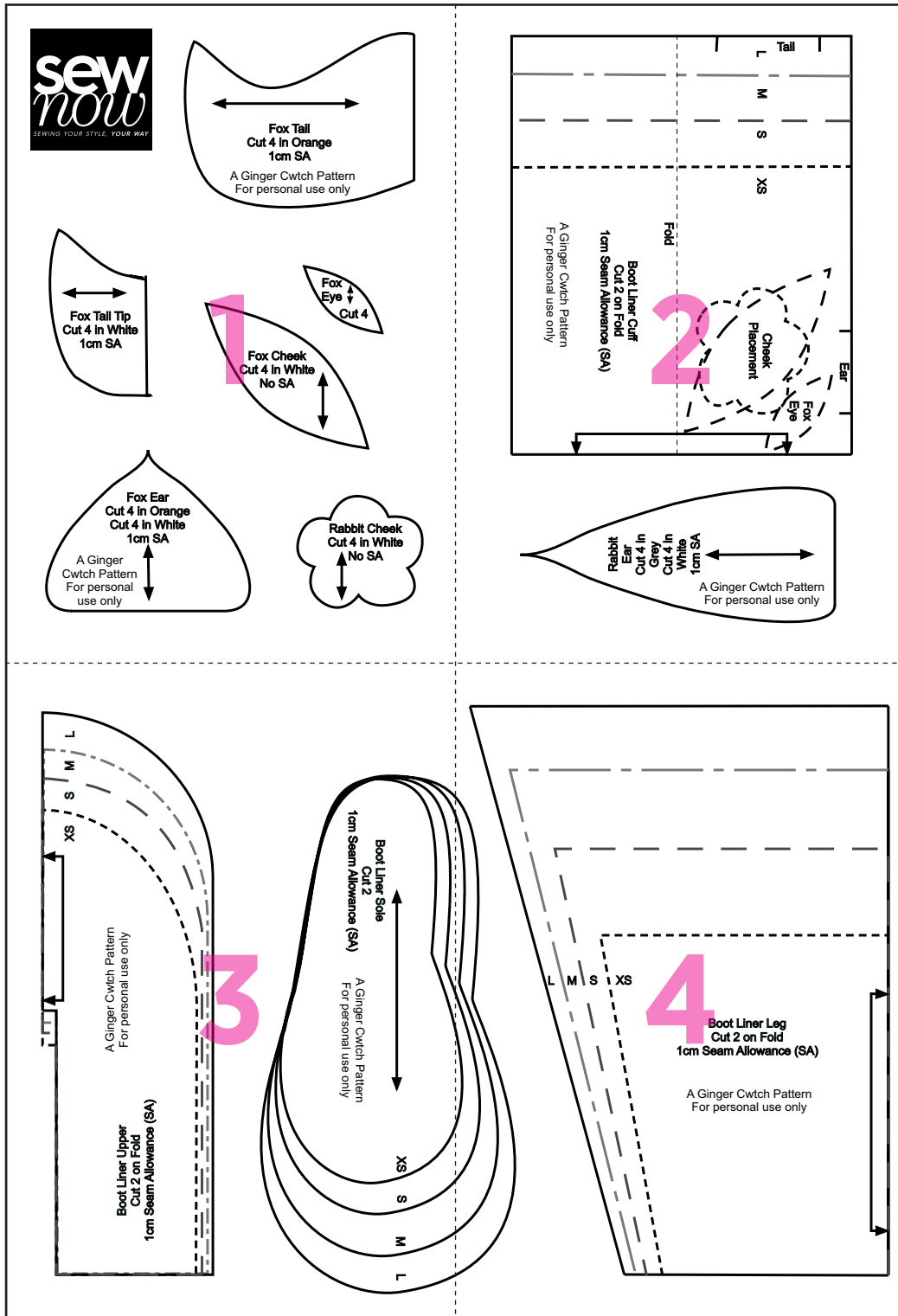


White 5cm pompoms

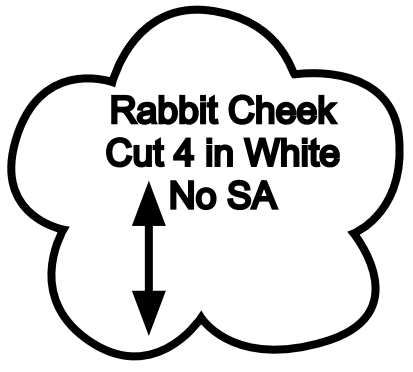
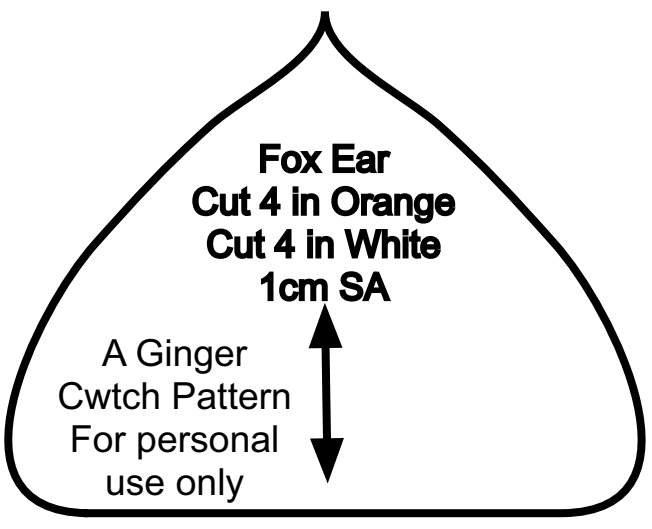
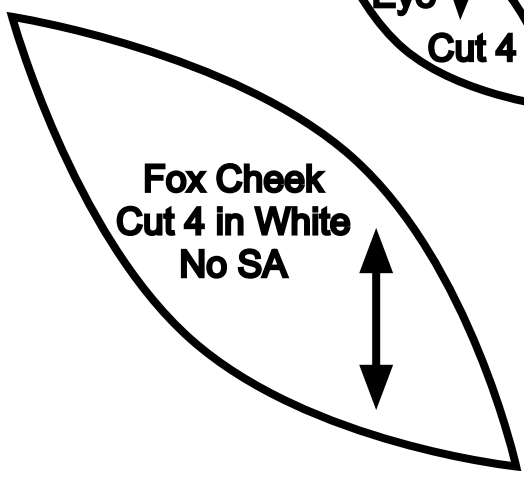
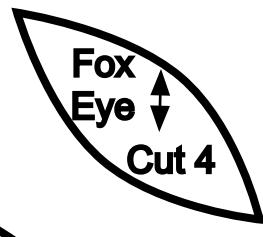
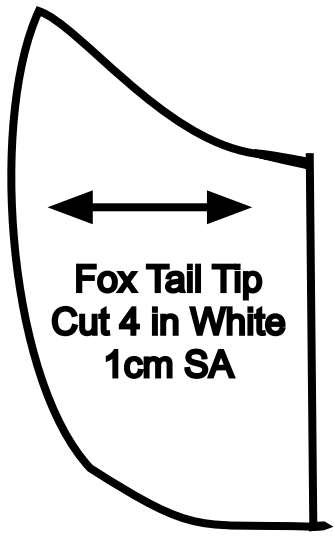
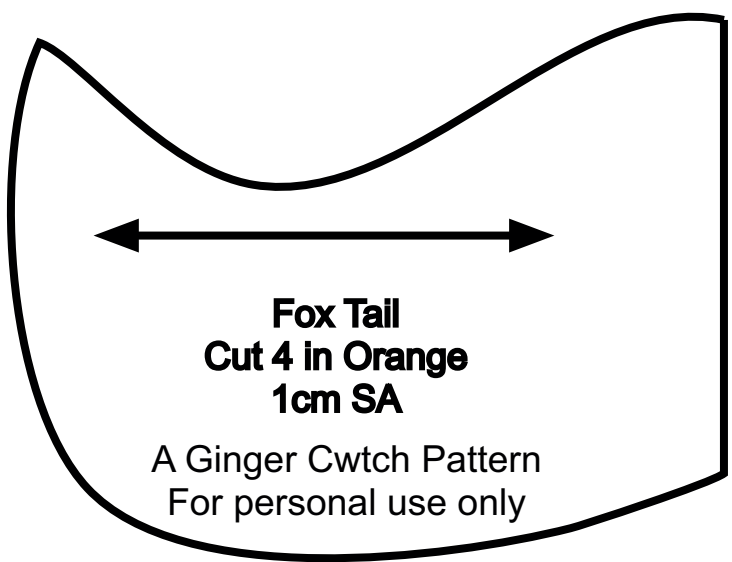
£1 for a pack of six

www.hobbycraft.co.uk

FOREST FOLK BOOT LINER

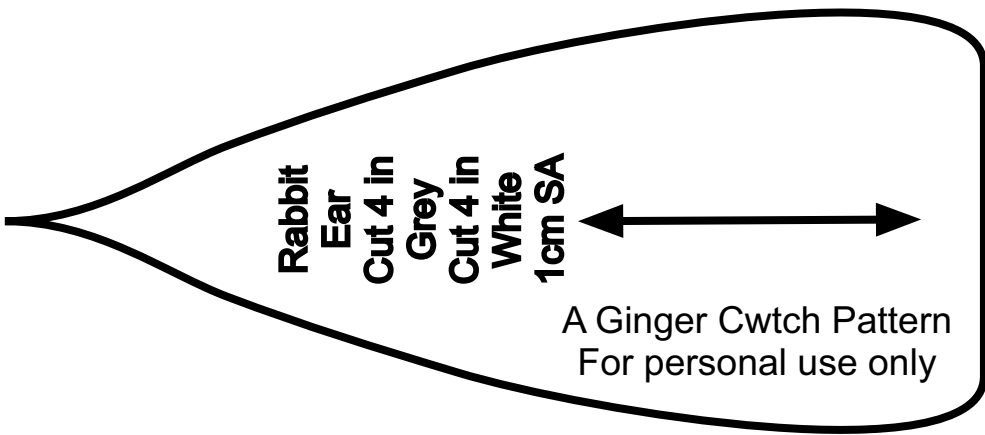
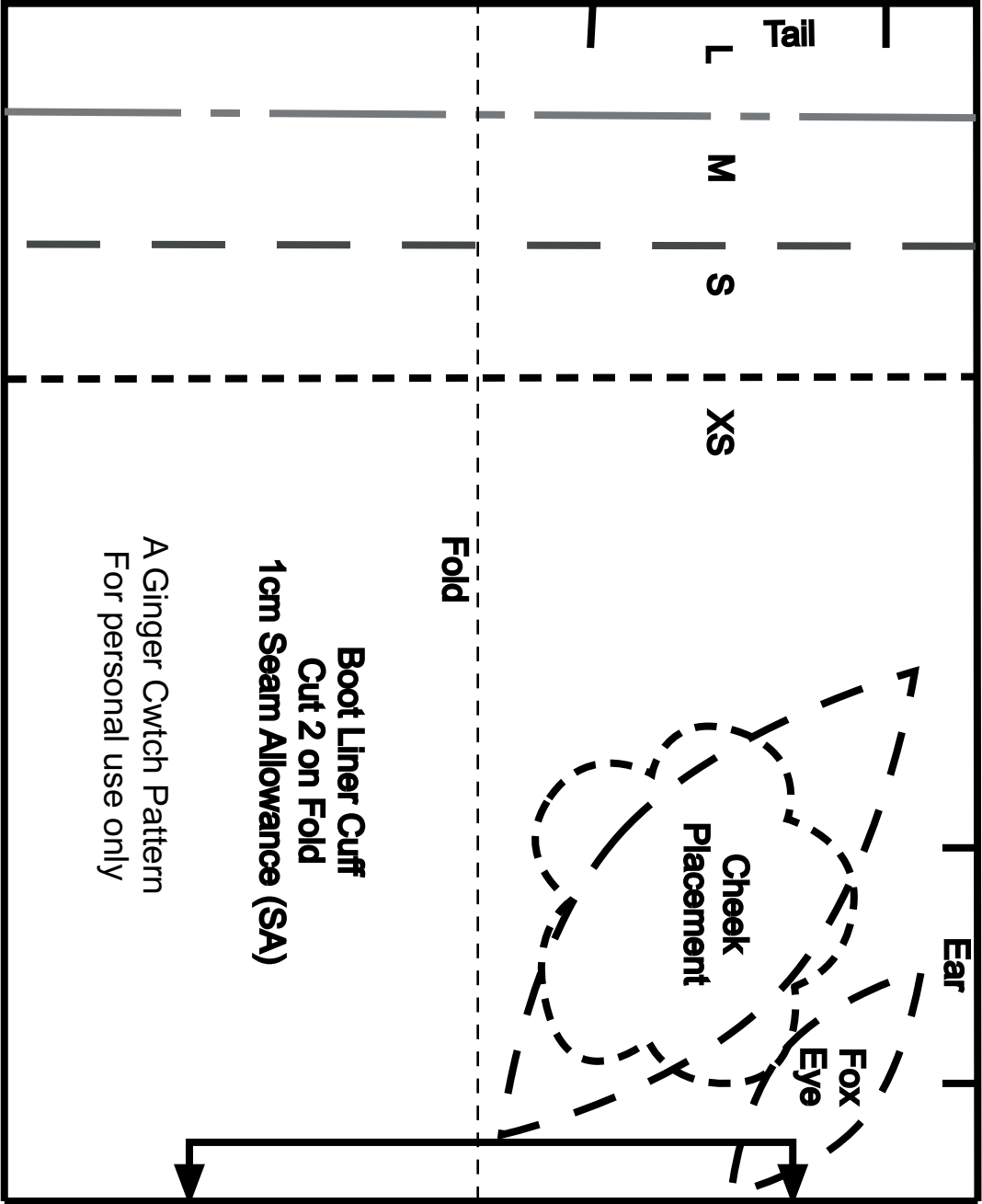


1

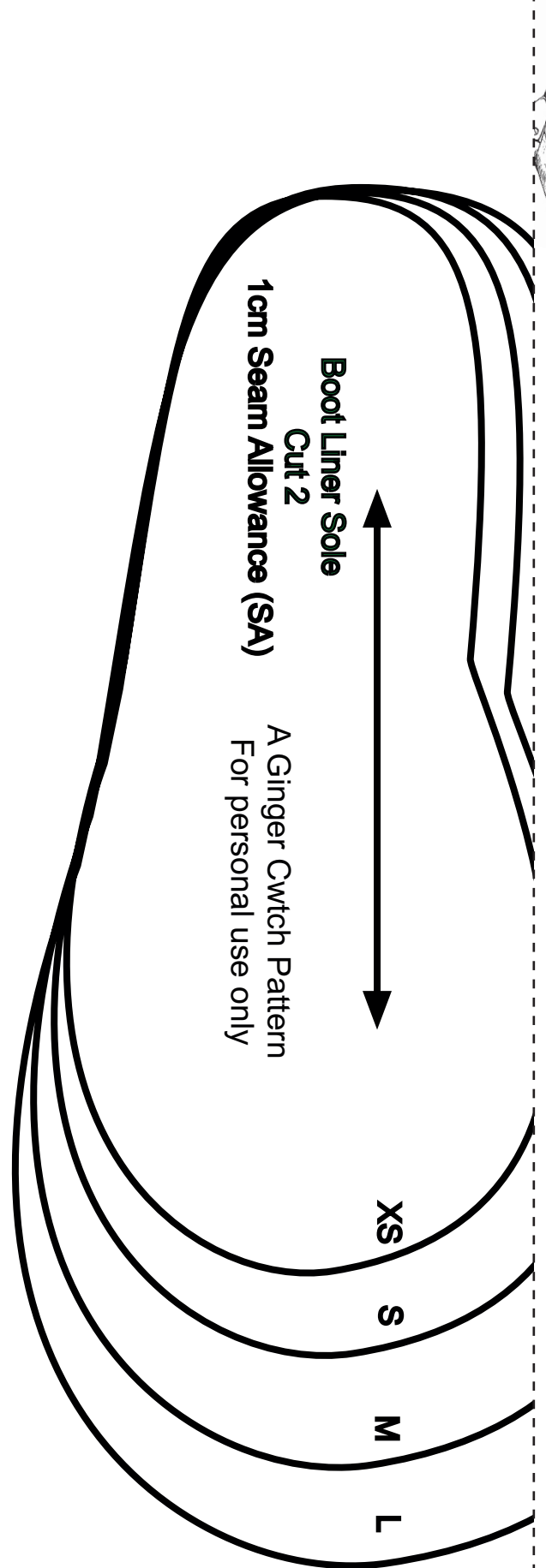
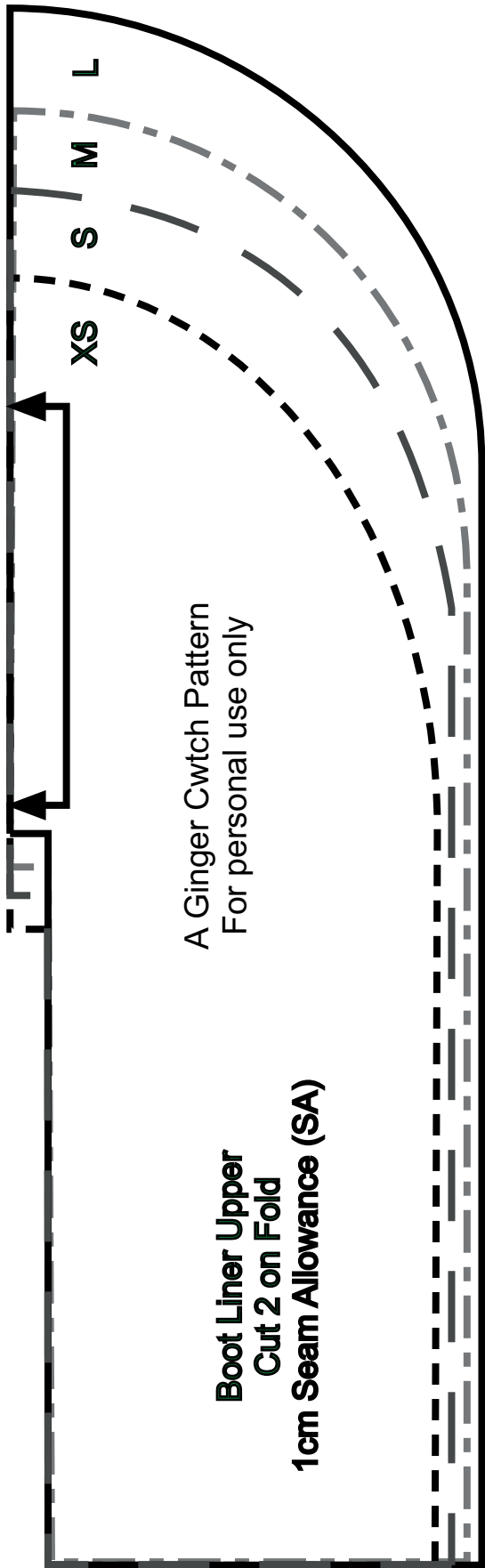




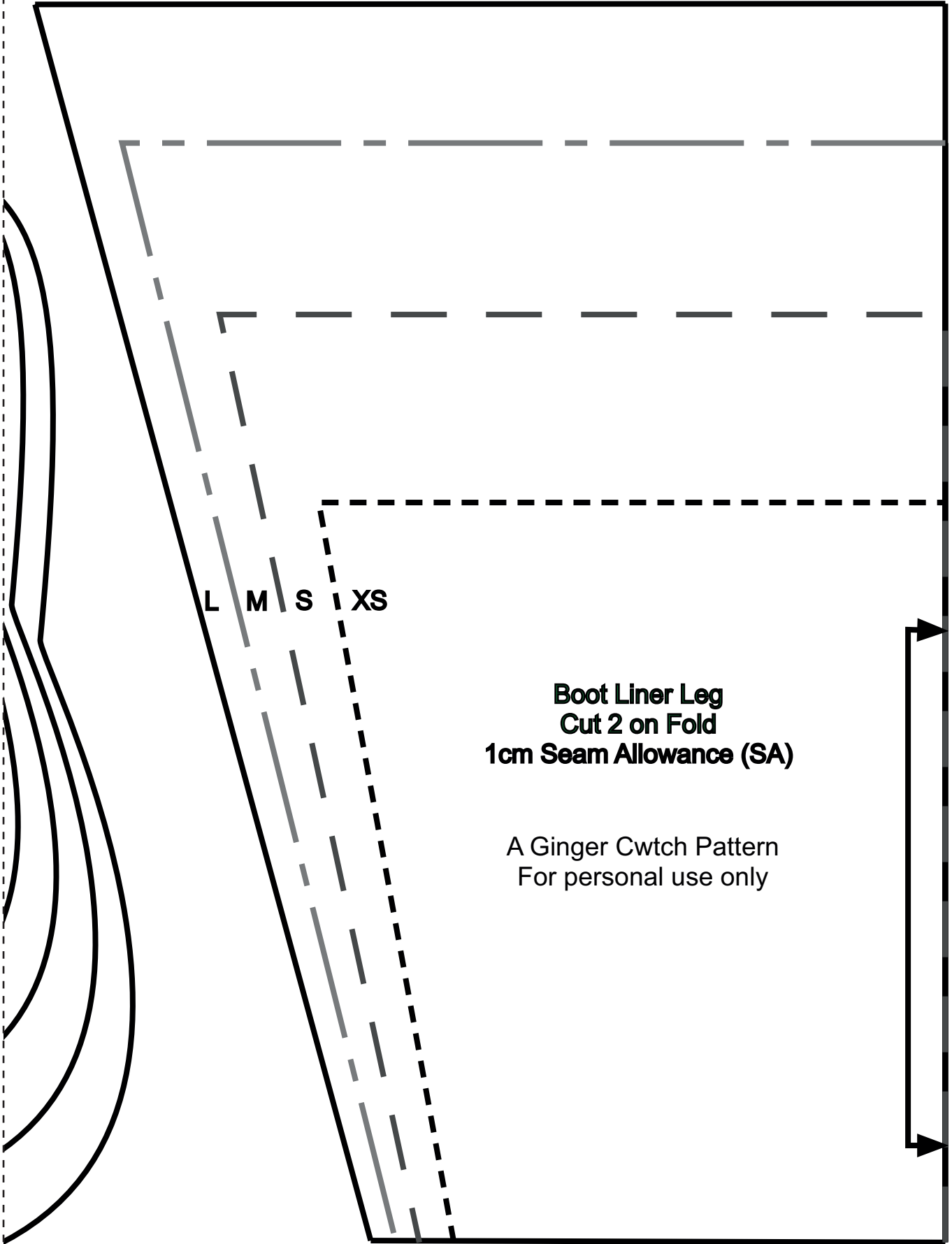
2



3



4



Boot Liner Leg
Cut 2 on Fold
1cm Seam Allowance (SA)

A Ginger Cwtch Pattern
For personal use only