



Ferdinand the Frog Pattern

Ferdinand is a lovable frog, perfect for Valentine's Day or any day. He's got Velcro hands and feet so that he can hug a soft, plush heart (or a box of candy or another gift you have in mind). Oh, and with that golden crown he's also a frog prince.

This is an original sewing pattern by Abby Glassenberg.

Copyright 2016. All rights reserved. It is illegal to distribute this pattern electronically or in hard copy without permission.

Have a question? Email me [mailto::abbyglassenberg@comcast.net](mailto:abbyglassenberg@comcast.net)





To make Ferdinand you'll need:

1/2 yard of bright green fleece
6 inch x 12 inch piece of red fleece
scraps of wool-blend felt in dark yellow and white
a pair of 12mm black safety eyes
black and white embroidery floss or Perle cotton, 18 inches of each
3/4 inch Velcro, 4 inches
fiberfill stuffing
coordinating all-purpose thread

Cut out the templates (cut along the outer lines, stitch along the inner lines). Fleece is stretchy so be sure to align the arrows on the pattern pieces so that they're parallel with the selvedge.

From bright green fleece cut:

2 bodies

8 arms/legs

From red fleece cut:

2 hearts

From yellow felt cut:

1 crown

From white felt cut:

2 eyes

Transfer the markings to the fabric with a disappearing fabric marker or chalk.

Cut the Velcro into four 1 inch pieces. Pin, then sew a piece to the palm on the right side of of four arm/leg pieces.



Pair up a Velcro limb with a plain one and stitch around, leaving the straight edge at the top open, as marked. Repeat to create 3 more limbs. Clip the curves, especially between and around the fingers, and turn the limbs right side out. Stuff the fingers and palms, leaving the remainder of each limb unstuffed. If you'd like, topstitch across the elbow/knee of each limb.



Pair up the body pieces, right sides together, and stitch around leaving gaps for the crown, arms, legs, and the stuffing opening.





Place the arms on your work table, one Velcro side up and one Velcro side down. Slide each arm through the stuffing opening and out at each arm opening. Pin.
Place the legs on your work table, Velcro side down. Slide each leg through the stuffing opening and out at each leg opening. Pin. (It helps to push the hands up into the head to get the out of the way.)



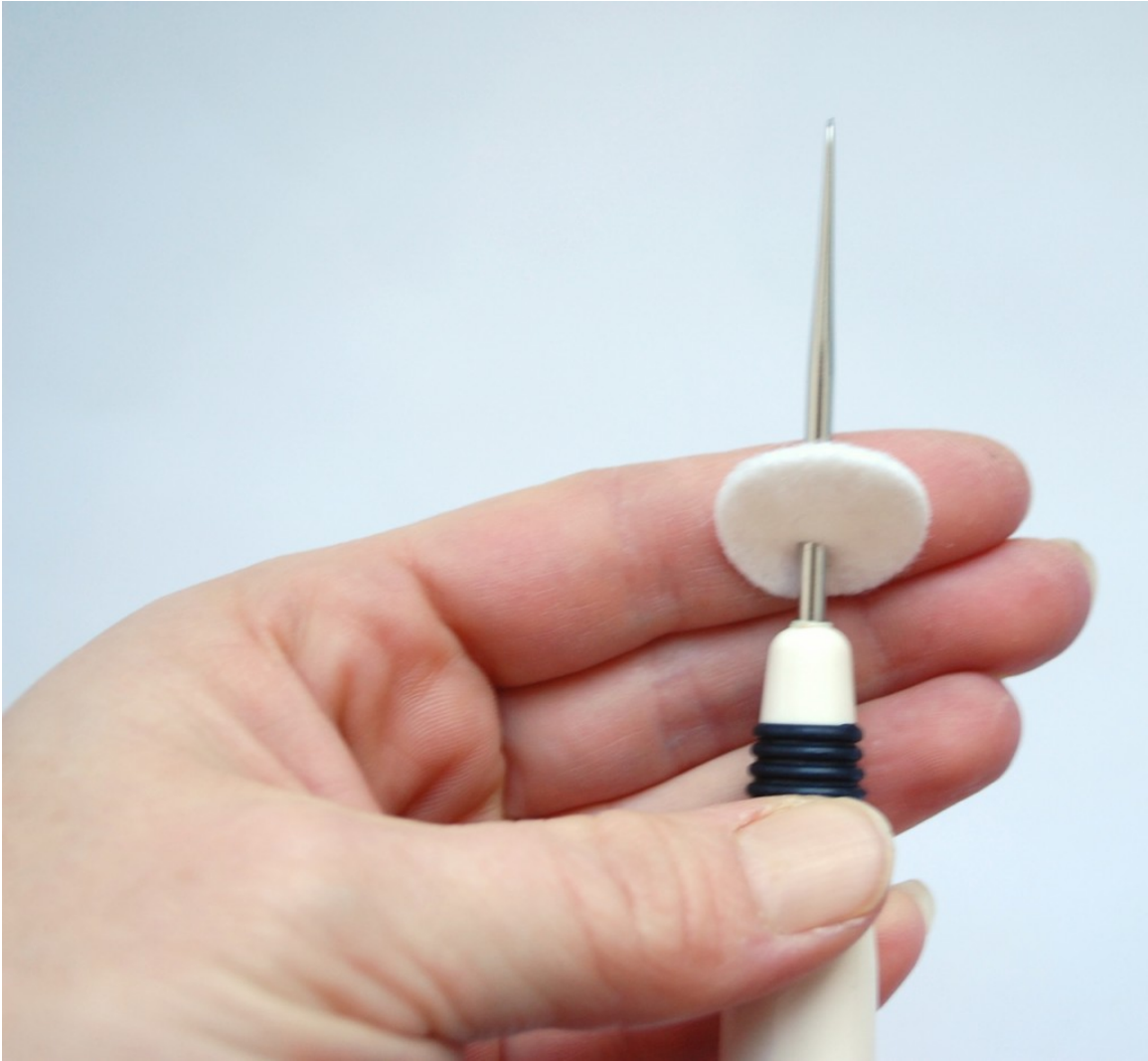
Slide the crown through the stuffing opening and up to the crown opening, aligning the straight edge with the edge of the head. Pin.

Stitch the arm, leg, and crown openings closed.



Clip the curves, especially at the neck and around each eye, and turn the frog right side out.

Use the tip of a pair of embroidery scissors or a ball point awl to poke a hole through each white felt circle slightly below center.



Poke eye holes in the frog as marked.



Slide the post of the safety eyes through the felt eyes, then through the frog. Push the washers on until they're flush with the fabric. (Note that safety eyes are intended for children ages 3 and up. Embroider the eyes with satin stitch if you're making this toy for a baby.)

Thread an embroidery needle with black floss (3 strands from 6-play floss) or Perle cotton and embroider the mouth with stem stitch.

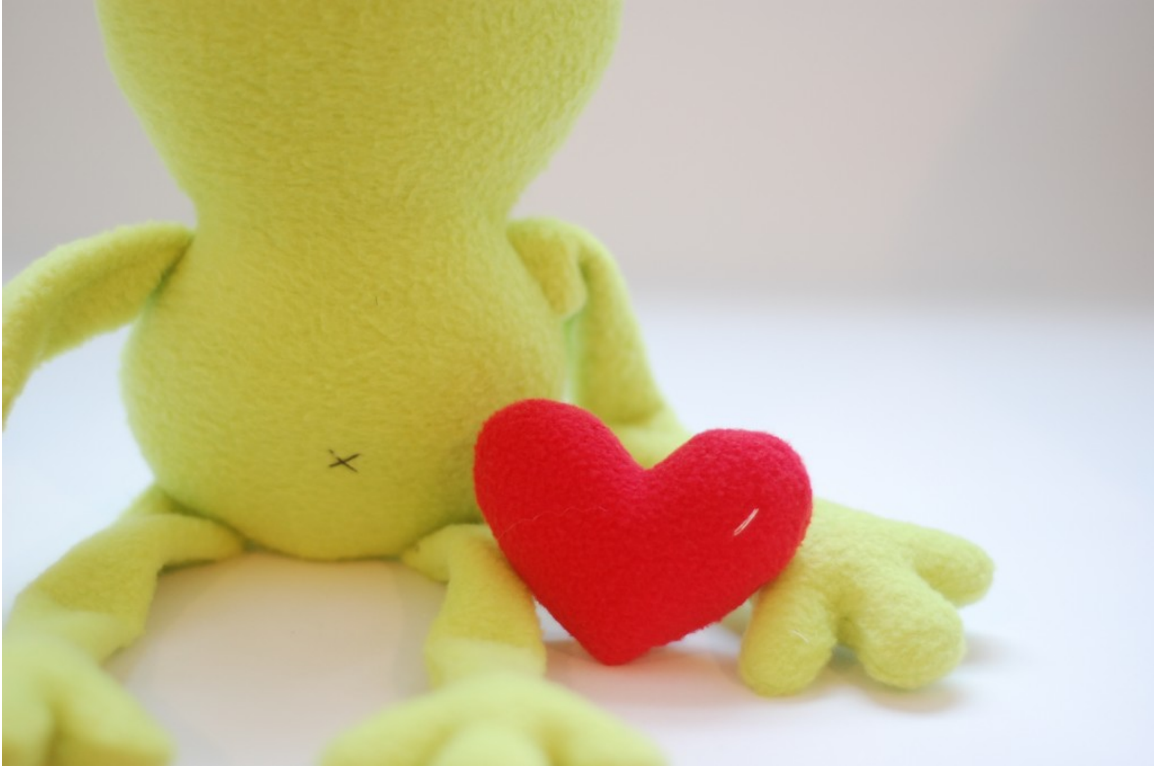


Stuff the frog firmly, beginning with the eyes (hemostats are awesome for this!). Close the opening with ladder stitch.

To make the heart, place the two heart pieces right sides together. Pin, then stitch around, leaving the opening as marked.



Clip the curves and turn the heart right side out. Take two straight stitches with white embroidery floss (3 strands from 6-ply floss) or Perle cotton to make a highlight. Stuff the heart firmly and close the opening with ladder stitch.



(If you'd like, enlarge the heart template by 100% and make an even larger plush heart for Ferdinand!) Wrap Ferdinand's arms around the heart, or another treat, and give him to someone you love for an un-frog-etable Valentine's Day!



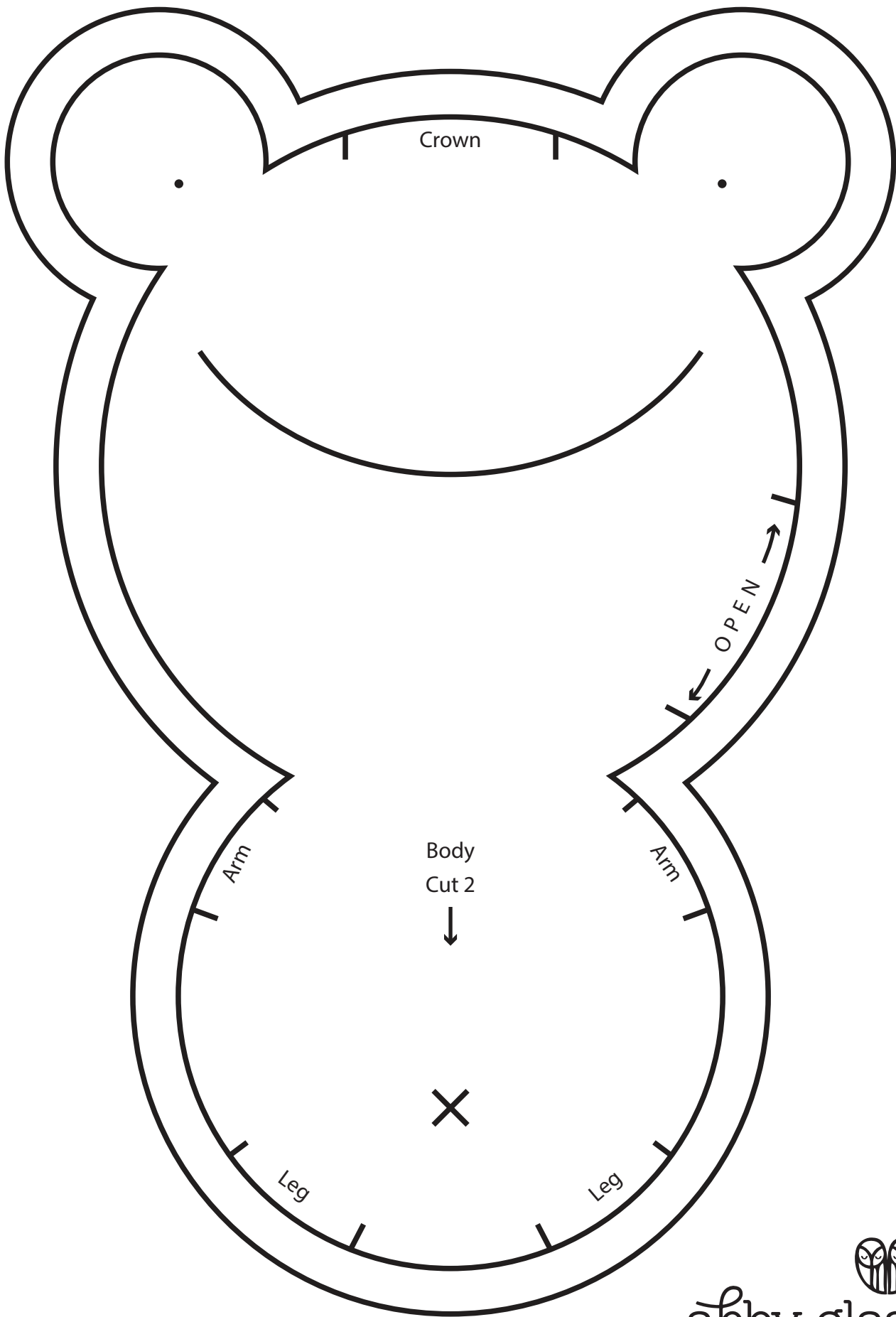
*This is an original sewing pattern by Abby Glassenberg.
Copyright 2016. All rights reserved. It is illegal to distribute this pattern electronically or in hard copy without permission.
Have a question? Email me [mailto::abbyglassenberg@comcast.net](mailto:abbyglassenberg@comcast.net)*

++++++

Find me online:

Facebook: <http://www.facebook.com/AbbyGlassenbergDesign>
Etsy: <http://www.whilesenaps.etsy.com>
Blog: <http://www.whilesenaps.com>

Thank you!



abby glassenberg

DESIGN

Ferdinand the Frog

Page 1 of 2

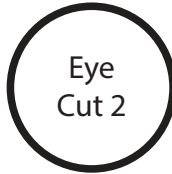


abby glassenberg

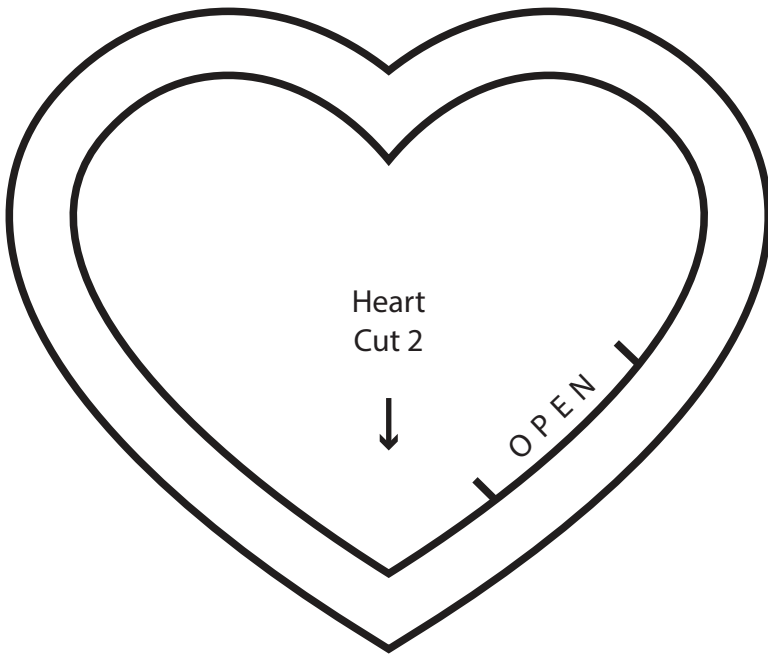
DESIGN

Ferdinand the Frog

Page 2 of 2

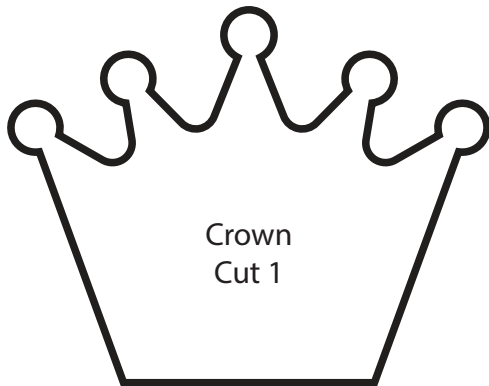


Eye
Cut 2

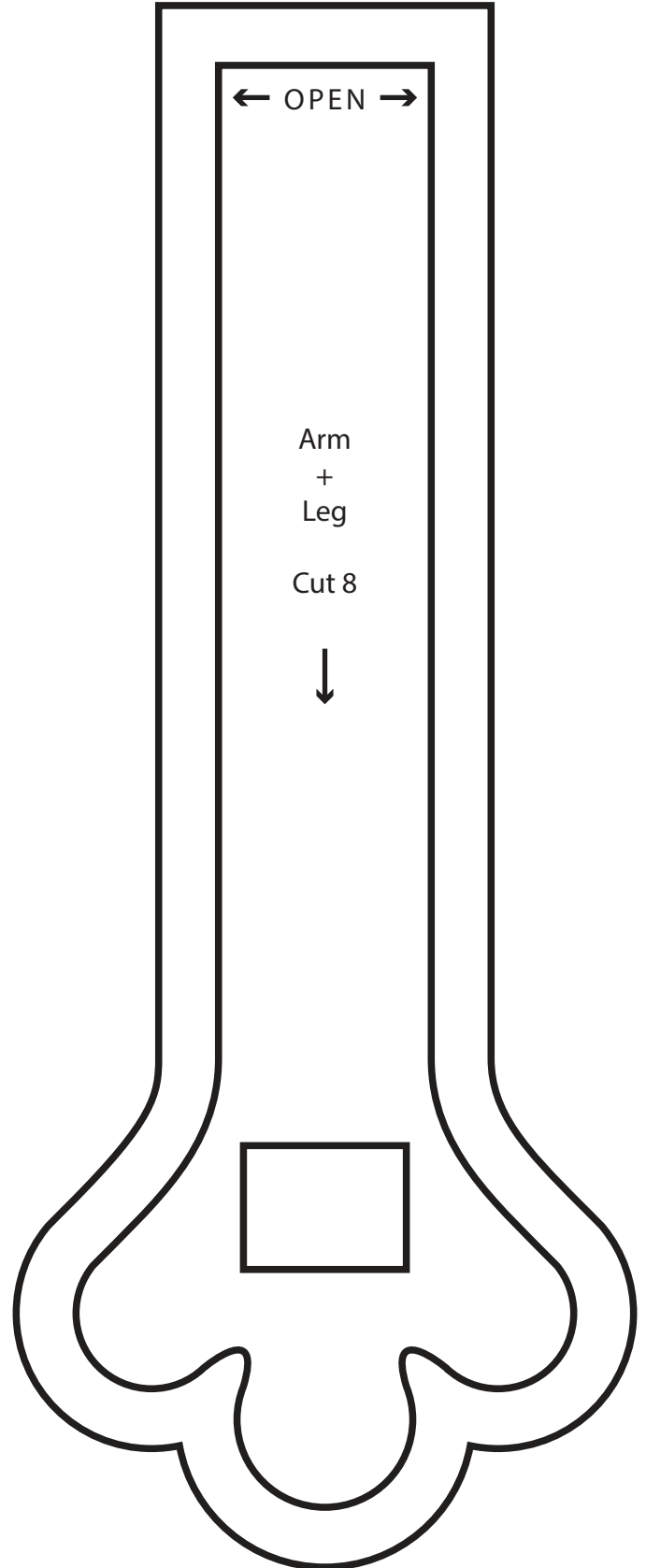


Heart
Cut 2

OPEN



Crown
Cut 1



← OPEN →

Arm
+
Leg

Cut 8

