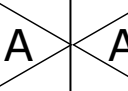




© Mause-Mama 2015

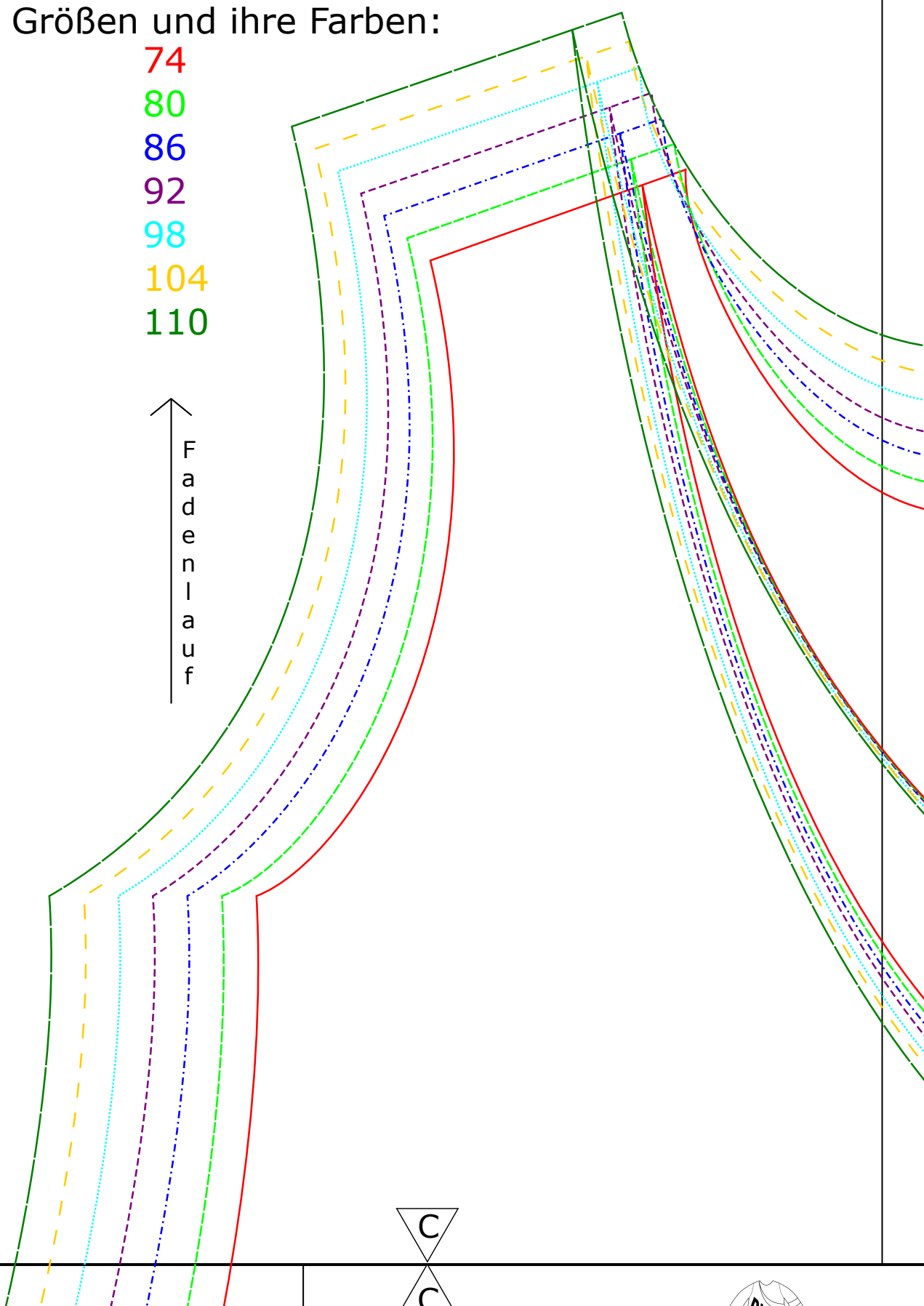
Bitte überall, außer am Halsau



Größen und ihre Farben:

- 74
- 80
- 86
- 92
- 98
- 104
- 110

↑
F
a
d
e
n
l
a
u
f



alsausschnitt, Nahtzugabe hinzufügen!

A A



3 cm
x
3 cm

Vorderteil 1

Vorderteil 2

D

E

D

E



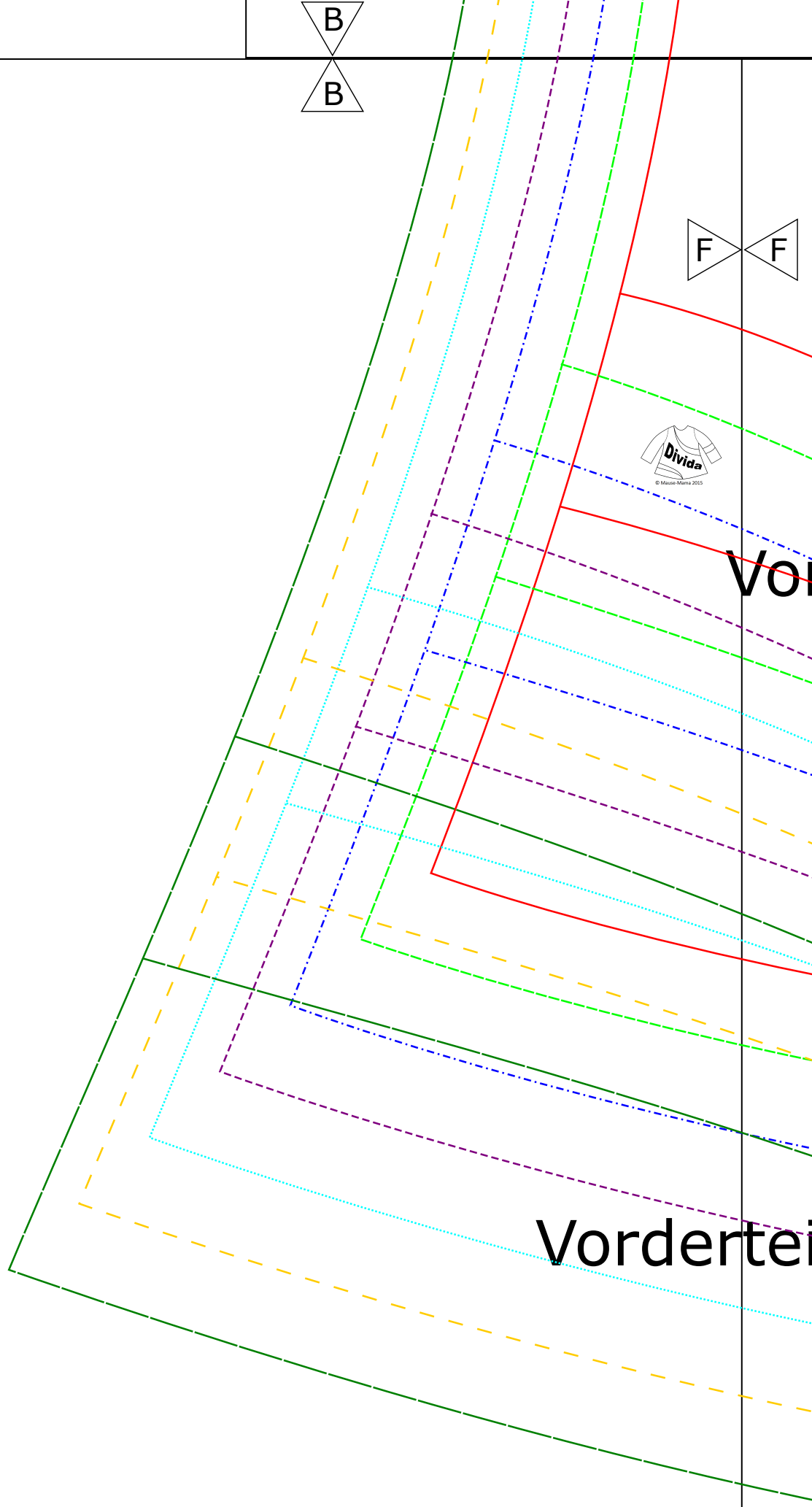
B
B

F F



Vord

Vorderteil



C
C

D
D



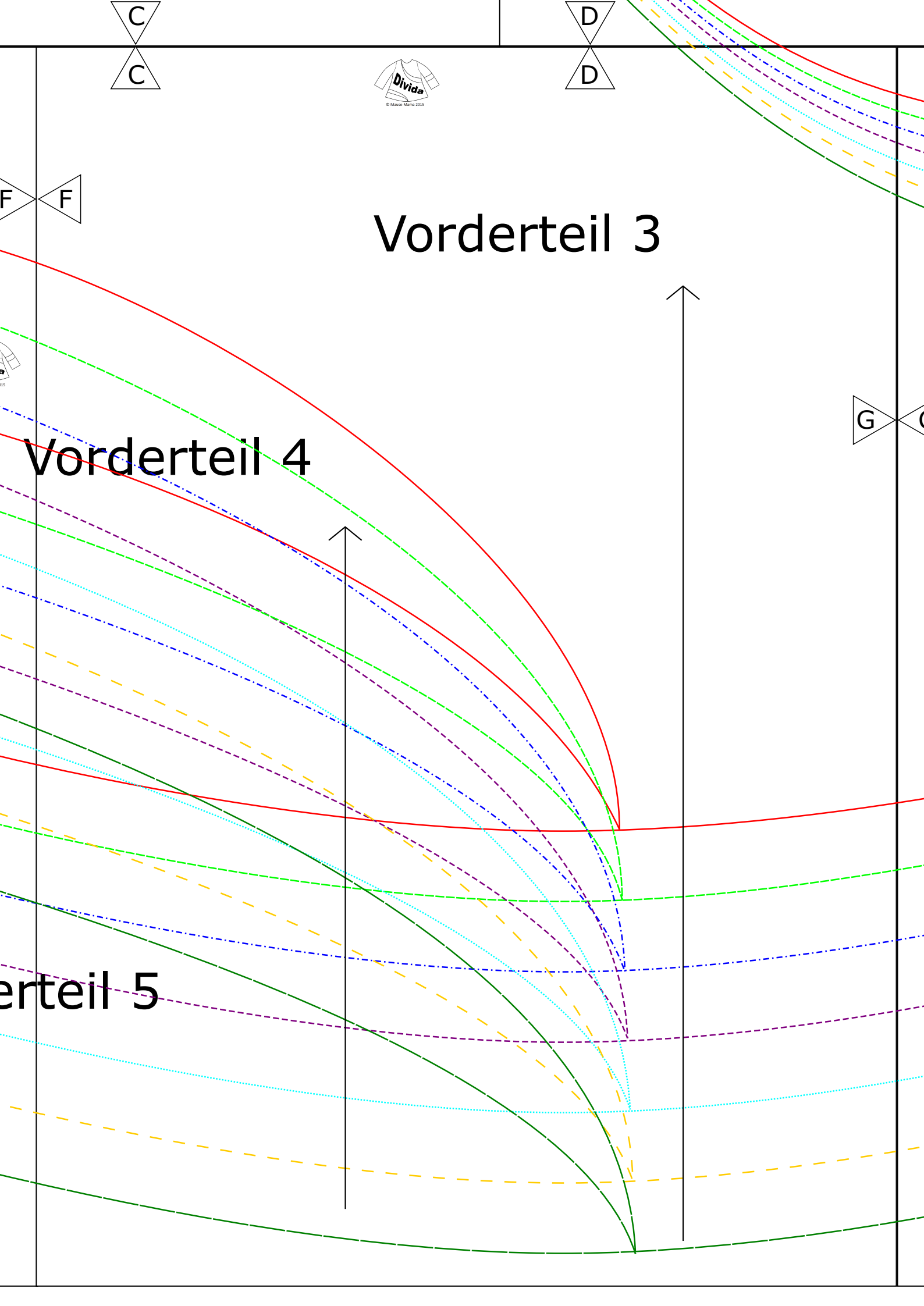
F F

Vorderteil 3

Vorderteil 4

G C

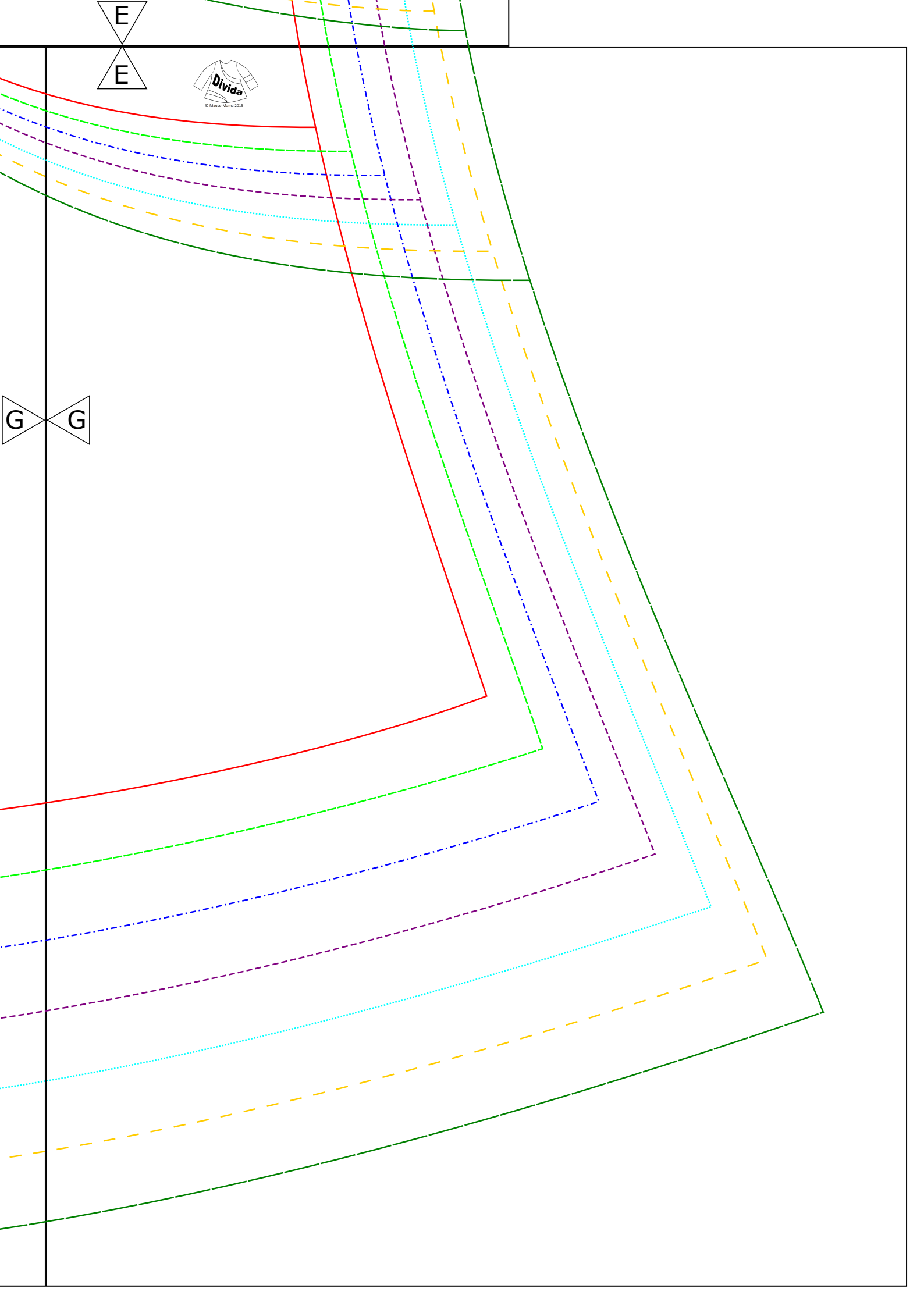
Vorderteil 5

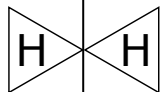


E
E

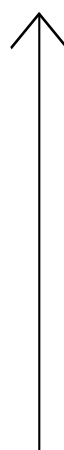


G
G

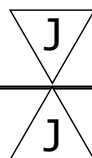
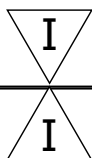


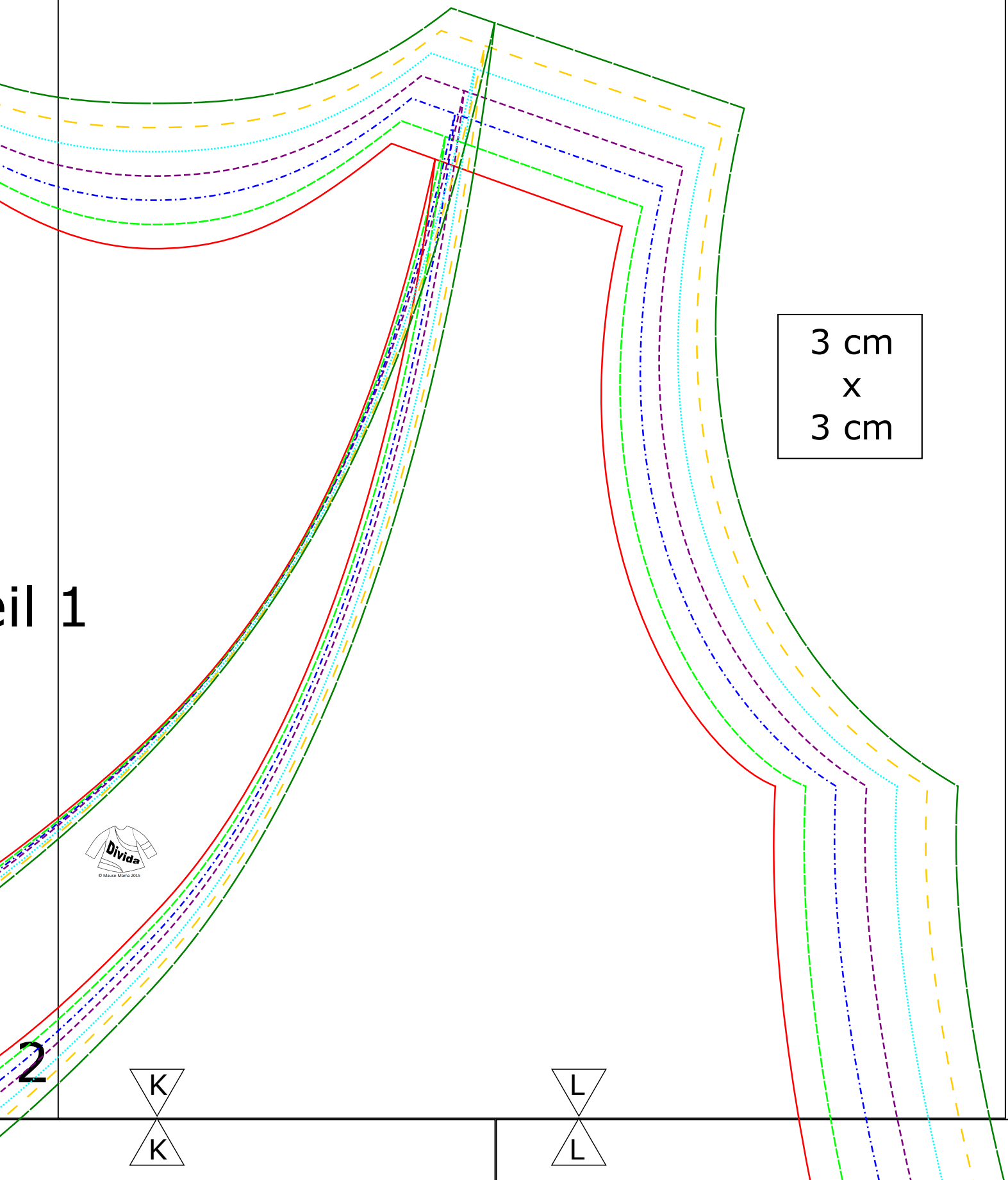
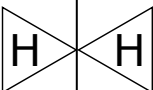


Rückenteil 1



Rückenteil 2





3 cm
x
3 cm

eil 1

2



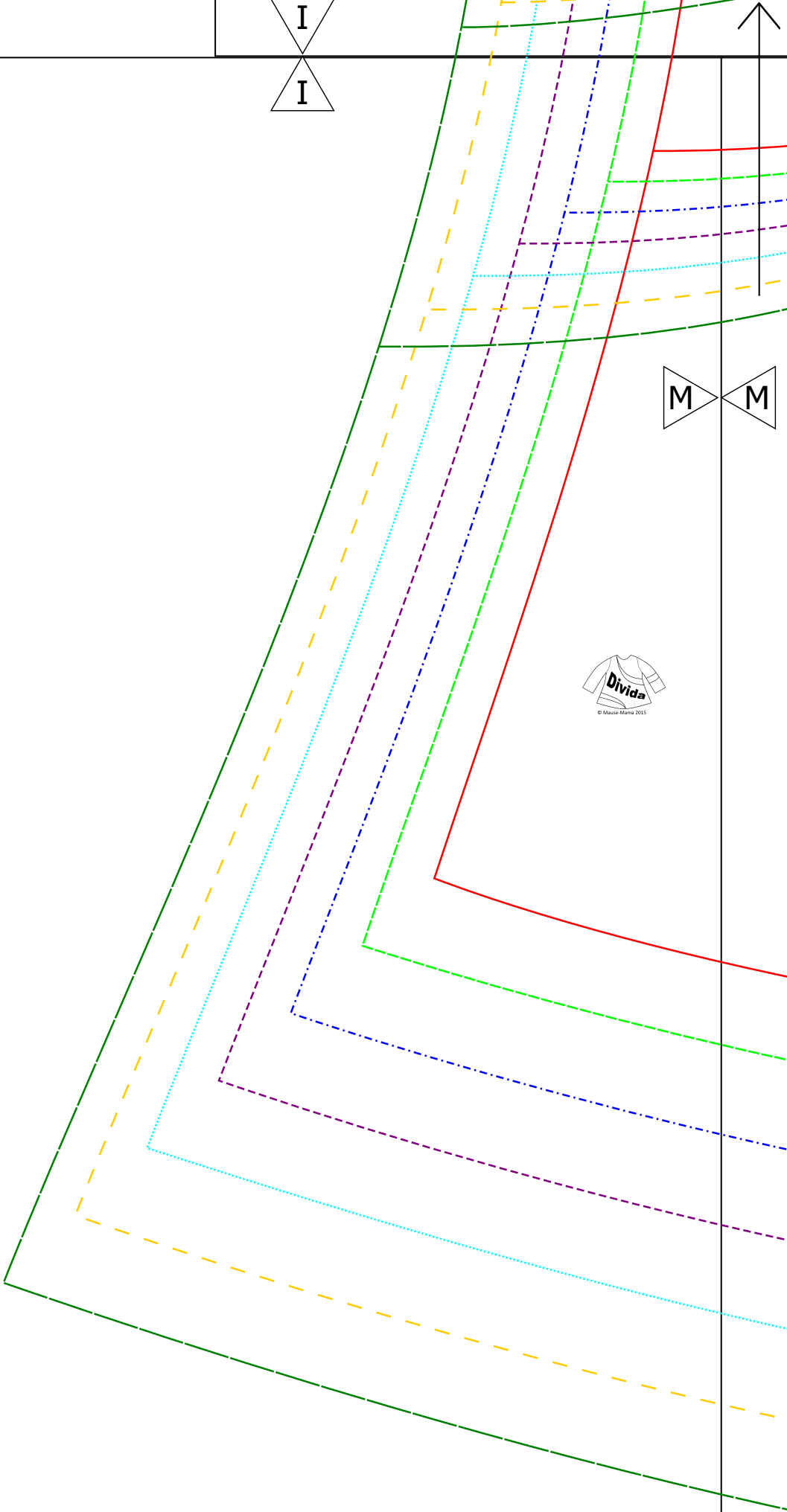
I
I



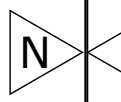
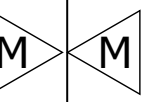
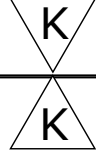
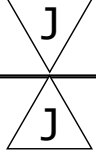
M M



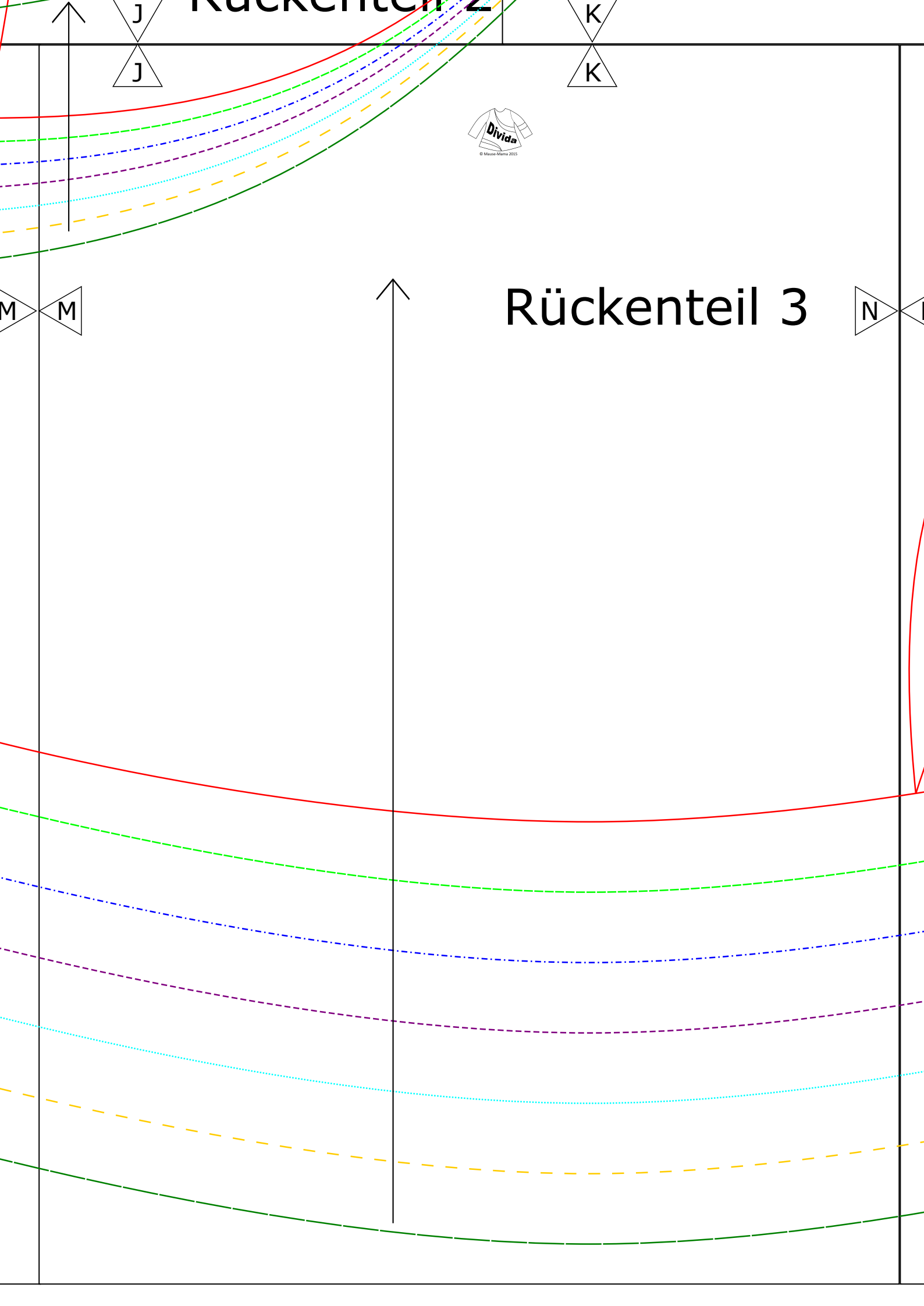
© Mousse Maria 2015



Rückenteil 2



Rückenteil 3



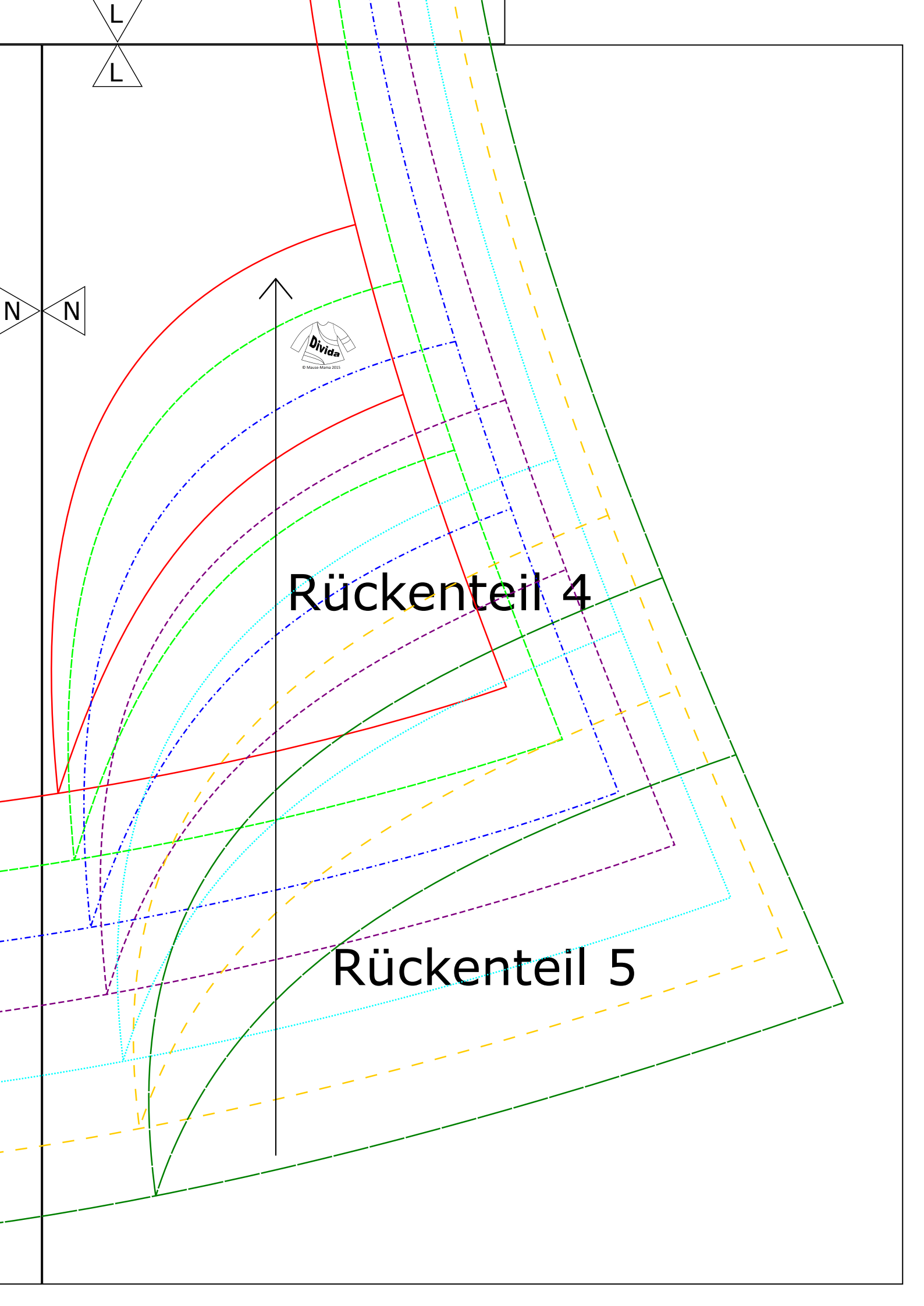
L
L

N
N



Rückenteil 4

Rückenteil 5

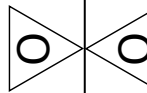




3 cm
x
3 cm

Ärmel Teil 1

Ärmel Teil 2



Ärmel Teil 2

Ärmel Teil 3

